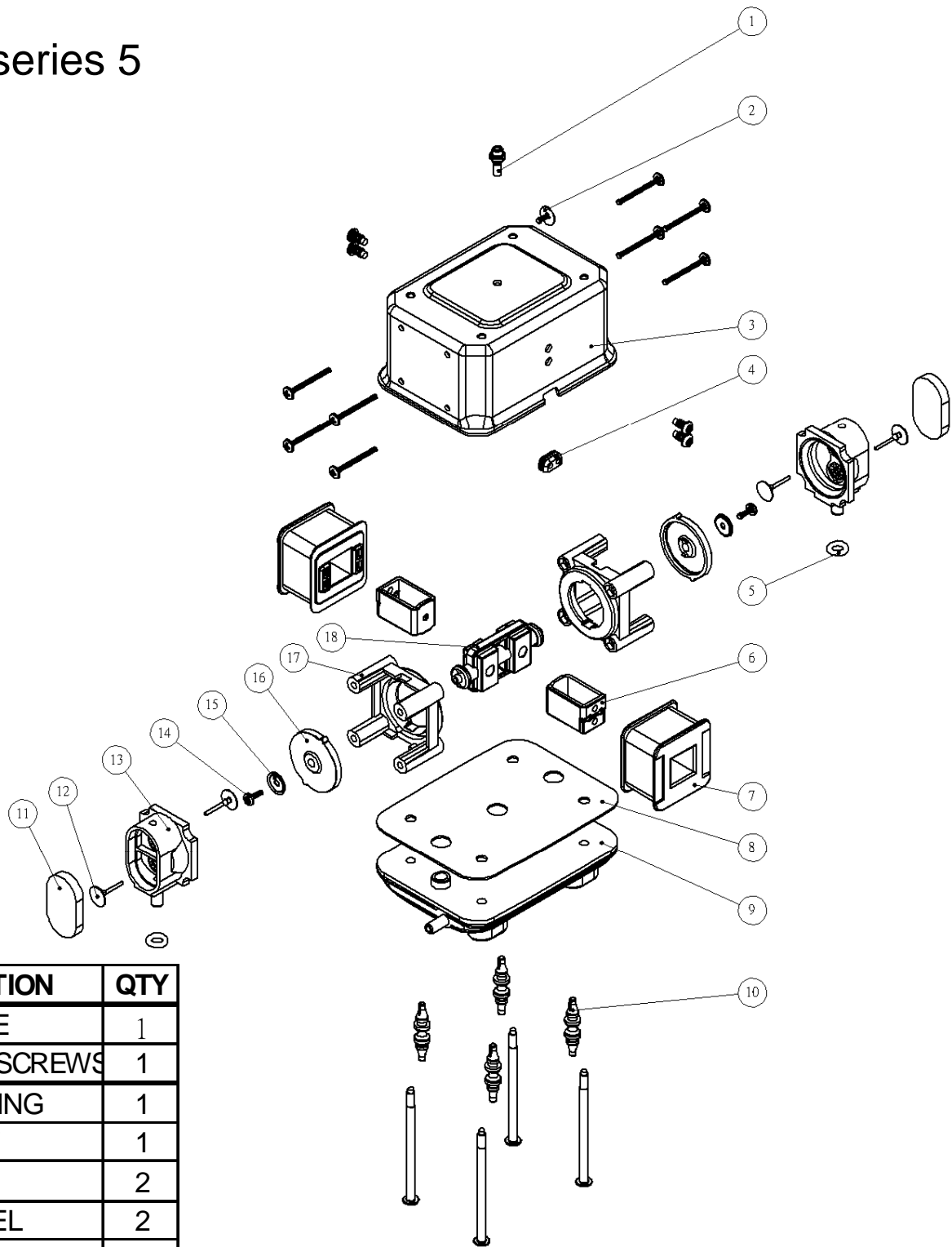


DM version series 5



| NO. | DESCRIPTION | QTY |
|-----|-------------------|-----|
| 1 | RUBBER TUBE | 1 |
| 2 | GROUNDING SCREWS | 1 |
| 3 | UPPER HOUSING | 1 |
| 4 | CORD RELIEF | 1 |
| 5 | "O"RING | 2 |
| 6 | CENTER STEEL | 2 |
| 7 | ELECTROMAGNET | 2 |
| 8 | GASKET | 1 |
| 9 | LOWER HOUSING | 1 |
| 10 | RUBBER FEET | 4 |
| 11 | CHAMBER SEAL | 2 |
| 12 | CHECK VALVE | 4 |
| 13 | DIAPHRAGM HOUSING | 2 |
| 14 | SCREWS | 2 |
| 15 | WASHER | 2 |
| 16 | DIAPHRAGM | 2 |
| 17 | DIAPHRAGM FRAME | 2 |
| 18 | ACTIVATING ARM | 1 |