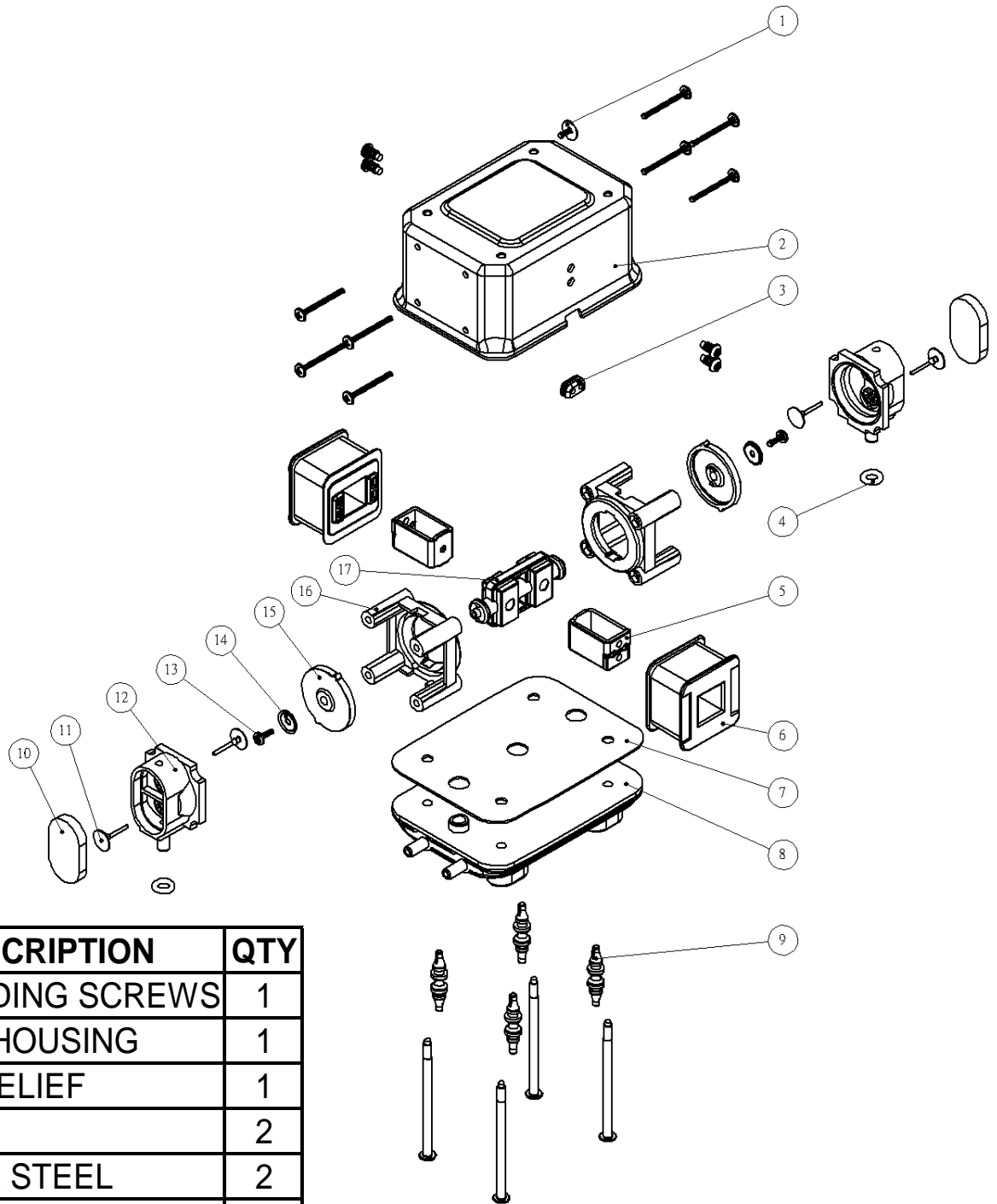


DM version series 5S、10S、12S



NO.	DESCRIPTION	QTY
1	GROUNDING SCREWS	1
2	UPPER HOUSING	1
3	CORD RELIEF	1
4	"O"RING	2
5	CENTER STEEL	2
6	ELECTROMAGNET	2
7	GASKET	1
8	LOWER HOUSING	1
9	RUBBER FEET	4
10	CHAMBER SEAL	2
11	CHECK VALVE	4
12	DIAPHRAGM HOUSING	2
13	SCREWS	2
14	WASHER	2
15	DIAPHRAGM	2
16	DIAPHRAGM FRAME	2
17	ACTIVATING ARM	1